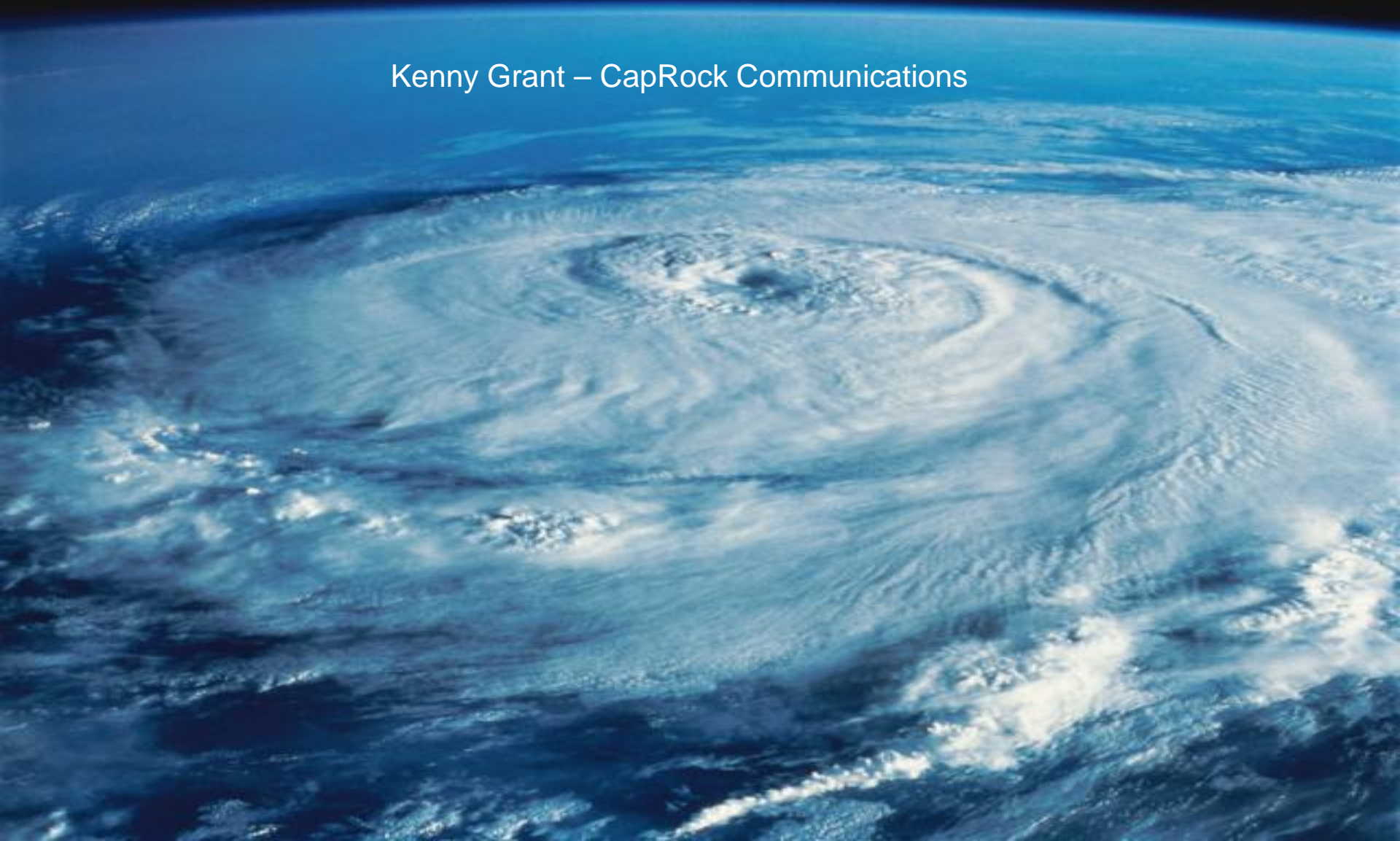


# *Business Continuity, Disaster Recovery and Emergency Management in Oil and Gas.*

Kenny Grant – CapRock Communications

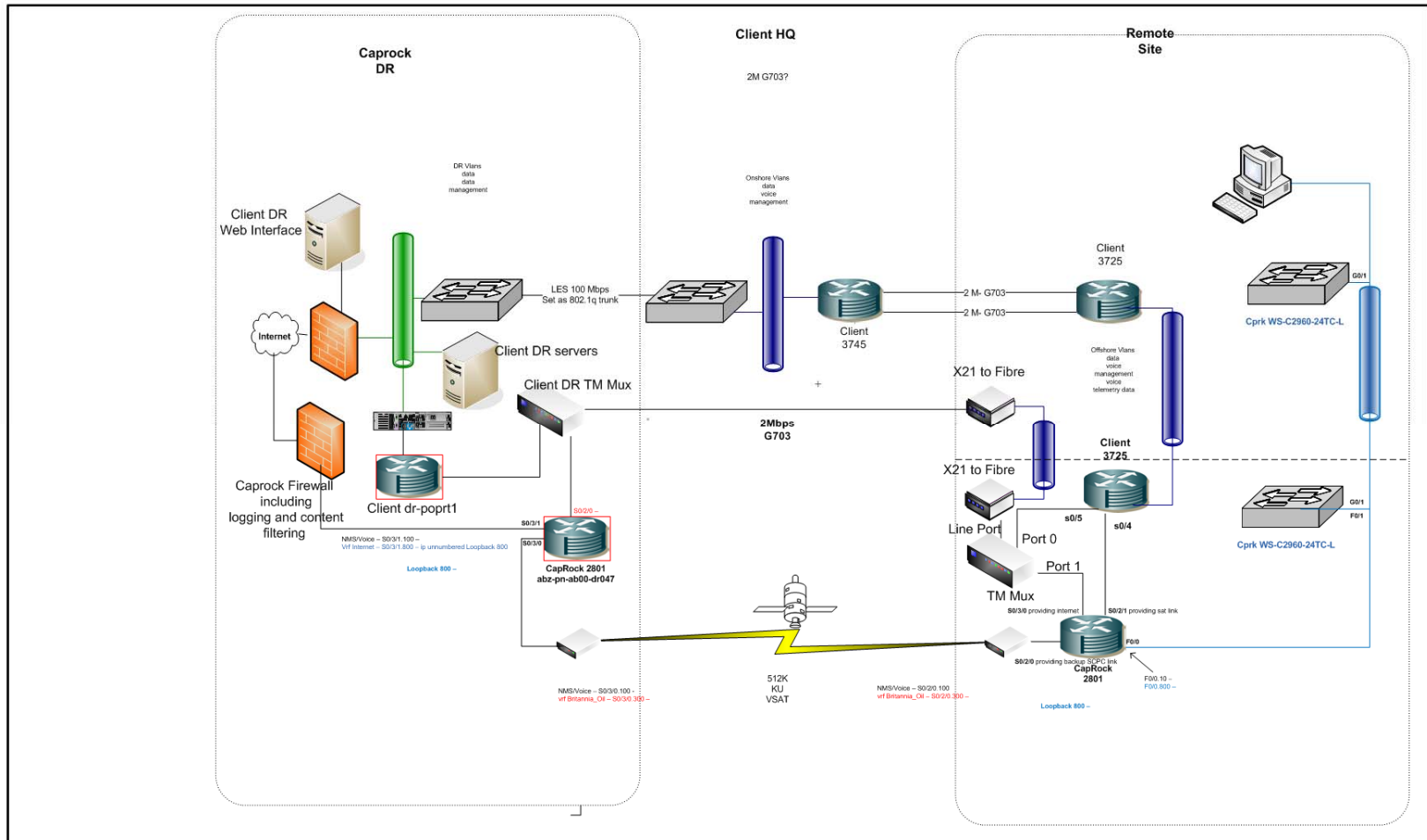


# ***Business Continuity, DR and Emergency Planning***

- **Context – what are we planning for**
  - Loss of primary link to a remote operational site.
  - Loss of the remote site itself.
  - Loss / damage to the remote VSAT hardware.
  - Loss of the HQ site that supports the remote.
- **Solutions**
  - L Band at remote backing up VSAT primary
  - VSAT at remote backing up primary
  - Hosting services – contingency against loss of HQ
  - Pre-positioned / booked quick deploy remote hardware
- **Considerations**
  - How much back up capacity ?
  - Business impact of not planning / procuring / implementing ?

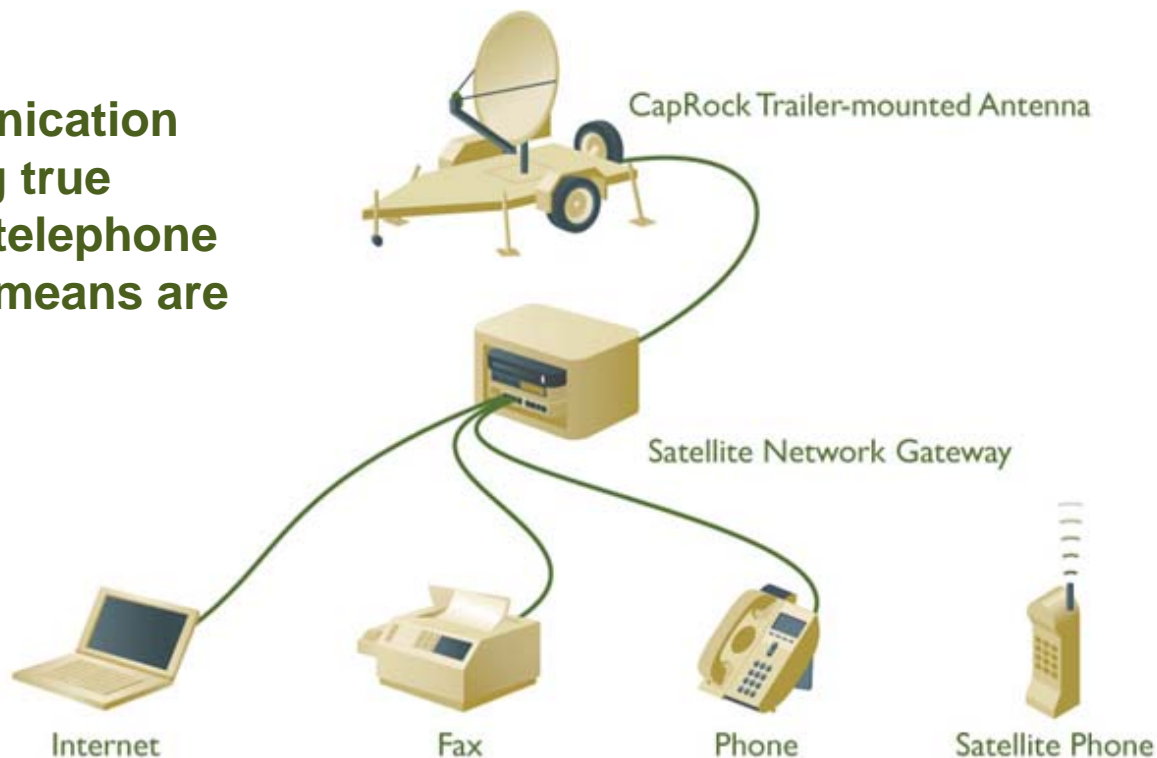


# Possible DR Solution for North Sea Operations



# ***Disaster Recovery Solutions Designed for Rapid Deployment***

**Self-contained communication solutions, providing true broadband Internet and telephone service when traditional means are unavailable**



# Disaster Recovery Reservation Program

Guaranteed equipment and service availability

- **Program**

- Reservation fee guarantees stand-by equipment
- Technician dispatched within 6 business hours of deployment request
- Service charges only apply when system is activated

- **Service Details**

- Connection to public telephone network
- Broadband Internet access
- Always on-access with speeds from 128 Kbps to 2 Mbps
- 24/7 network monitoring and support
- Dual teleport configuration service

- **Fully Contained Solutions**

- Trailer-mounted fixed antenna
- Satellite network gateway
- IP telephone(s)
- Fax machine(s)





CapRock Communications, Inc. 2009. All rights reserved. Product and service specifications are subject to change without notice. All information is believed to be accurate at the time of publication. CapRock Communications does not assume responsibility for errors that may appear in this document. This document is not an offer for sale of any product or service. Provision of services is conditioned upon execution of a service agreement. Other terms and conditions may apply. *CapRock, CapRock Communications, SeaAccess Communications, IPxpress, Reliability to the Extreme, and World-Class Communications Anywhere in the World™* are trademarks of CapRock Communications Incorporated. All other trademarks and service marks are the property of their respective owners.